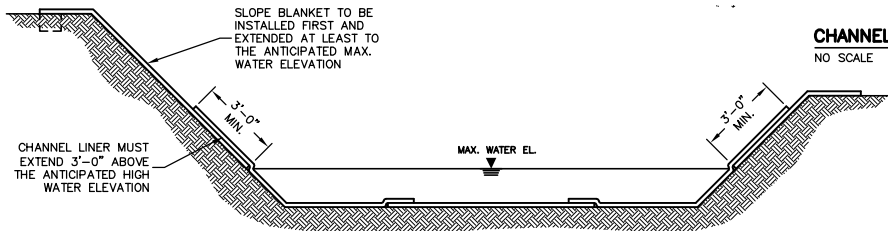
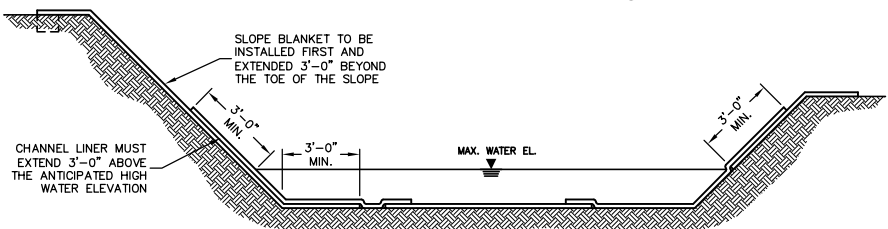


- NOTES:**
1. SEE CURLEX® SLOPE APPLICATION DETAIL SHEET FOR PROPER SLOPE INSTALLATION.
 2. STAPLE PATTERNS ARE DEPENDENT ON SITE CONDITIONS. SEE CURLEX® STAPLE PATTERN GUIDE FOR DETAILS.
 3. E-STAPLE® MAY BE USED IN PLACE OF WIRE STAPLES.

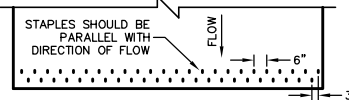


CHANNEL INSTALLATION METHOD "A"
NO SCALE

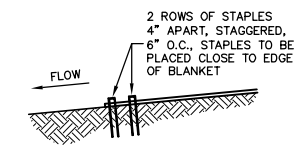


CHANNEL INSTALLATION METHOD "B"
NO SCALE

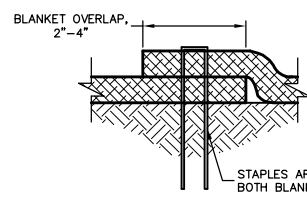
CHANNEL DETAIL
NO SCALE



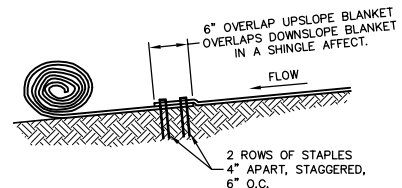
CHANNEL TERMINATION PLAN
NO SCALE



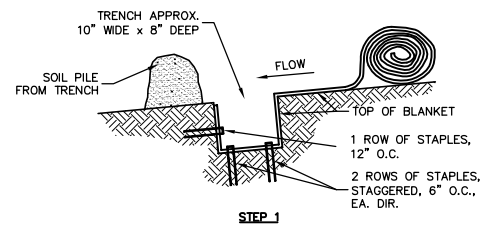
CHANNEL TERMINATION
NO SCALE



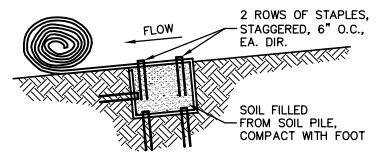
SIDE SEAM OVERLAP STAPLE DETAIL
NO SCALE



CHANNEL BLANKET END OF ROLL OVERLAP
NO SCALE

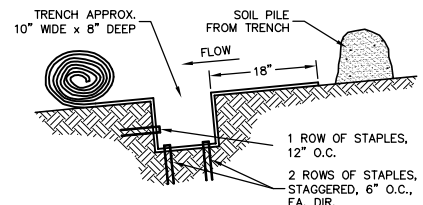


STEP 1

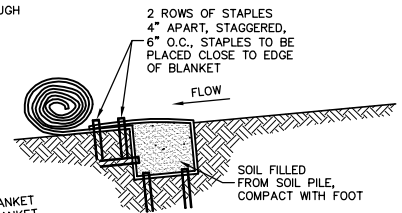


STEP 2

CHANNEL TRENCHING METHOD "A"
NO SCALE



STEP 1



STEP 2

CHANNEL TRENCHING METHOD "B"
NO SCALE

American Excelsior Company®
Earth Science Division

PROJECT MANAGER	
CHECKED BY:	
APPROVED BY:	
NO. BY DATE REVISIONS	

AMERICAN EXCELSIOR COMPANY
ARLINGTON, TEXAS

SHEET DESCRIPTION
CURLEX® CHANNEL
APPLICATION DETAIL

DATE 1/7/03	DRAWN BY
SCALE	PROJECT NO.
NONE	SHEET NO. 3