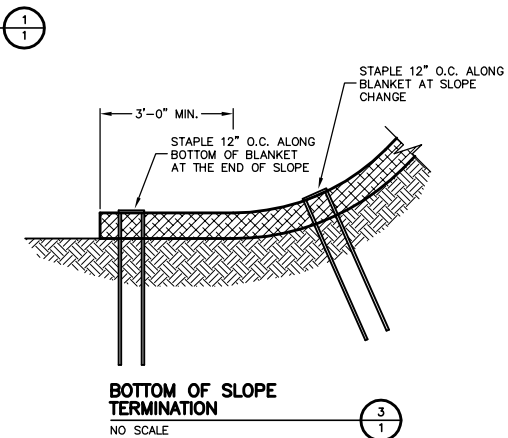
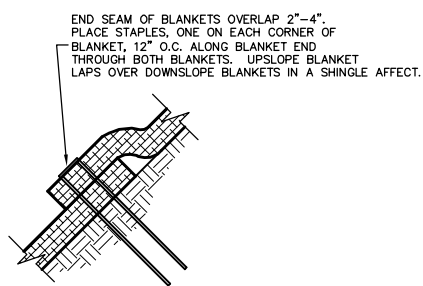


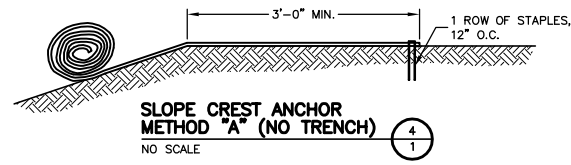
SLOPE DETAIL
NO SCALE



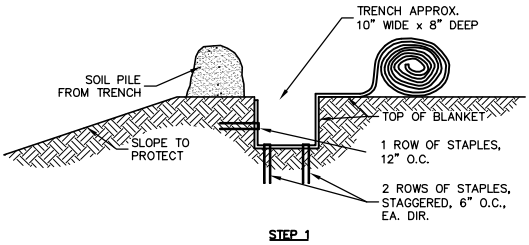
BOTTOM OF SLOPE TERMINATION
NO SCALE



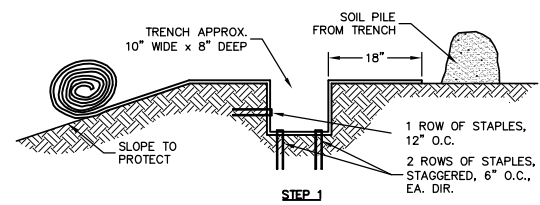
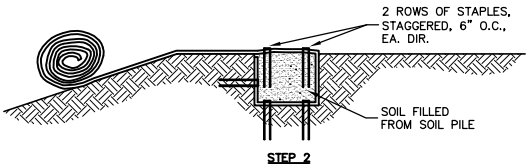
END ROLL OVERLAP
NO SCALE



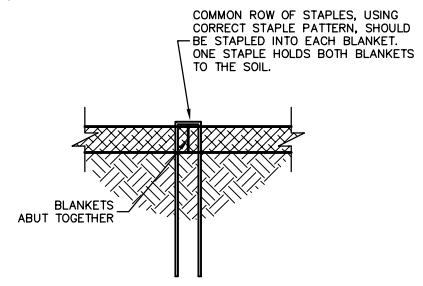
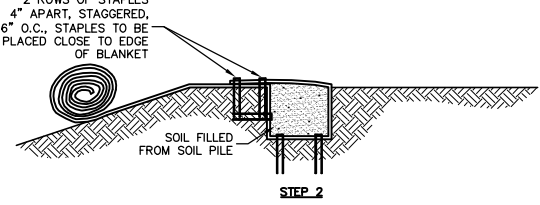
SLOPE CREST ANCHOR METHOD "A" (NO TRENCH)
NO SCALE



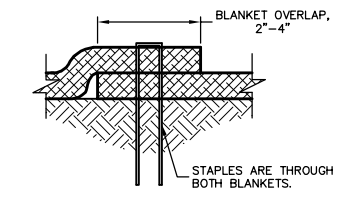
SLOPE TRENCHING METHOD "B"
NO SCALE



SLOPE TRENCHING METHOD "C"
NO SCALE



SIDE SEAM ABUT STAPLE DETAIL
NO SCALE



SIDE SEAM OVERLAP STAPLE DETAIL
NO SCALE

- NOTES:**
1. STAPLE PATTERNS ARE DEPENDENT ON SITE CONDITIONS. SEE CURLEX® STAPLE PATTERN GUIDE FOR DETAILS.
 2. E-STAPLE® MAY BE USED IN PLACE OF WIRE STAPLES.



PROJECT MANAGER			DATE 1/7/03			DRAWN BY		
CHECKED BY:			SCALE			PROJECT NO.		
APPROVED BY:			NONE			SHEET NO. 1		

AMERICAN EXCELSIOR COMPANY
ARLINGTON, TEXAS

SHEET DESCRIPTION
CURLEX® SLOPE APPLICATION DETAIL